

Modern Holiday Sheet Music
December 18, 2017

Book #23:
Part III in C Down 1 Octave Bass Clef

For Trombone

<u>Number</u>	<u>Title</u>	<u>Page</u>
1	Carol of the Bells	2
2	Chipmunk Song	3
3	Have Yourself a Merry Little Christmas (solo version)	4
4	Holly Jolly Christmas	5
5	Jingle Bells	6
6	Let it Snow!	7
7	Rockin' Around the Christmas Tree	8
8	Santa Claus is Coming to Town	9

Carol of the Bells

Leontovich Arr. Wilhousky

III down 1 octave

Musical notation for the first system, featuring a bass clef, a key signature of two flats (B-flat and E-flat), and a 3/4 time signature. The music consists of a series of quarter notes, with two measures marked with a '4' above them. The lyrics are: "Ding, dong, ding, dong." The dynamic marking is *p* (piano) and the instruction "sempre cresc." (sempre crescendo) is written below the notes.

13

Musical notation for the second system, starting at measure 13. The lyrics are: "One seems to hear words of good cheer from ev-'ry-where, fill-ing the air." The dynamic marking is *mf* (mezzo-forte).

17

Musical notation for the third system, starting at measure 17. The lyrics are: "Oh, how hap-py are their tones." The dynamic marking is *f* (forte).

21

Musical notation for the fourth system, starting at measure 21. The lyrics are: "Gai-ly they ring, while peo-ple sing, songs of good cheer, Christ-mas is here!" The dynamic marking is *ff* (fortissimo).

25

Musical notation for the fifth system, starting at measure 25. The lyrics are: "Ding, dong, ding dong, that is their song, with joy-ful ring, all car-ol-ing." The dynamic marking is *ff* (fortissimo).

29

Musical notation for the sixth system, starting at measure 29. The lyrics are: "Ding, dim. dong, ding, ding,". The dynamic marking is *dim.* (diminuendo).

33

Musical notation for the seventh system, starting at measure 33. The lyrics are: "dong." The dynamic marking is *pp* (pianissimo). This system includes a first ending bracket.

37

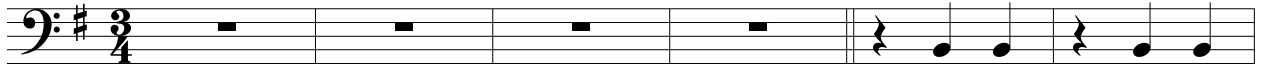
Musical notation for the eighth system, starting at measure 37. The lyrics are: "Oh, on they send, on, with-out end, their joy-ful tone to eve-ry home. Bohm!" The dynamic marking is *dim.* (diminuendo) for the first part, *ppp* (pianississimo) for the second part, and *mf* (mezzo-forte) for the final note. This system includes a second ending bracket.

The Chipmunk Song

Transposed down to G

Bagdasarian

III down 1 octave



7



13



19



25



31



Have Yourself a Merry Little Christmas

Hugh Martin and Ralph Blane

III down 1 octave

5

9

13

17

21

25

29

33


Jingle Bells

Pierpoint

IV




5



9



13



17



21



25



29



Let It Snow in F

Styne ⁷

Moderate Swing

III down 1 octave

7

15

23

31

Rockin' Around the Christmas Tree

Johnny Marks

Moderate Swing Intro ♩ = 168

Verse 1

Bridge 1

16

III down 1 octave

Aah! _____ Ooh. _____

22

Ooh. _____ "Deck the halls with

Verse 2

Solo

8

28

boughs of hol - ly." Aah! _____

41

Aah! _____ Aah! _____

Bridge 2

49

Aah! _____ Ooh. _____

Verse 3

6

57

Ooh. _____ "Deck the halls with boughs of hol - ly."

67

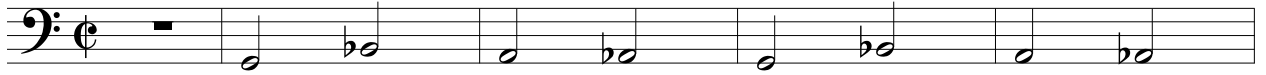
Aah! _____

Santa Claus is Comin' to Town

Transposed up to C

Coots and Gillespie

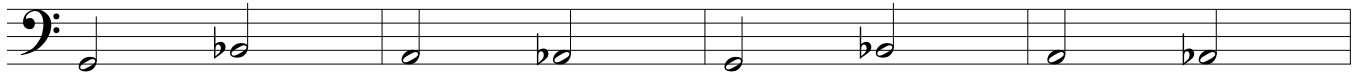
III down 1 octave



5



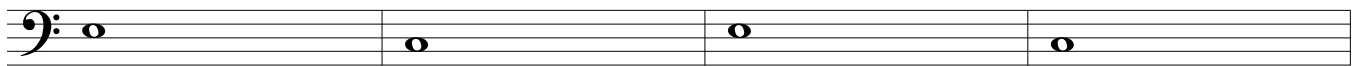
9



13



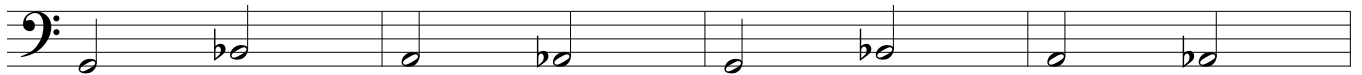
17



21



25



29

