

Cello

Viva la Vida

Coldplay

Arr. Trevor Jones

♩ = 138

Measures 1-4 of the cello part. The music is in 4/4 time with a key signature of three flats. The first two measures feature a steady eighth-note bass line. The last two measures feature a more active eighth-note melody. The dynamic marking *mf* is placed below the first measure.

5

Measures 5-8 of the cello part. The music continues with the eighth-note patterns established in the previous section. The dynamic marking *mf* is maintained.

9

Measures 9-12 of the cello part. The music continues with the eighth-note patterns. The dynamic marking *mp* is placed below the first measure of this section.

13

Measures 13-17 of the cello part. Measures 13-14 continue the eighth-note pattern. Measures 15-16 feature a more active eighth-note melody. Measure 17 features a sustained eighth-note bass line. The dynamic marking *f* is placed below measure 15, and *mf* is placed below measure 17.

18

Measures 18-21 of the cello part. Measures 18-19 continue the eighth-note pattern. Measures 20-21 feature a more active eighth-note melody. A *V* (accrescendo) hairpin is placed above measure 18. The dynamic marking *mf* is maintained.

22

Measures 22-26 of the cello part. Measures 22-23 continue the eighth-note pattern. Measures 24-25 feature a more active eighth-note melody. Measure 26 features a sustained eighth-note bass line. The dynamic marking *mp* is placed below measure 24.

27

Measures 27-30 of the cello part. Measures 27-28 continue the eighth-note pattern. Measures 29-30 feature a more active eighth-note melody. A *V* (accrescendo) hairpin is placed above measure 27. The dynamic marking *ff* is placed below measure 30.

31

Measures 31-34 of the cello part. Measures 31-32 feature a more active eighth-note melody. Measures 33-34 feature a sustained eighth-note bass line. The dynamic marking *mp* is placed below measure 31.

35

V

39

V

mf

45

52

p

mp

58

62

66

70

74

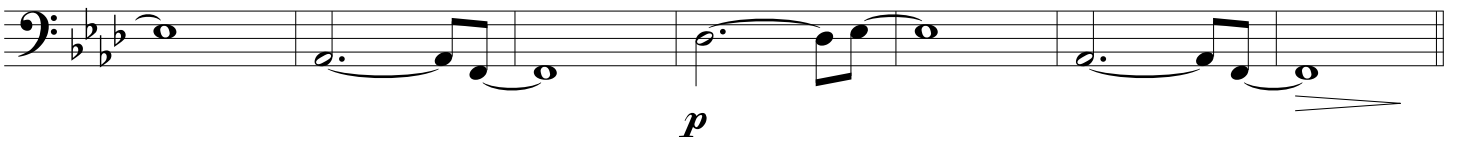
78



83



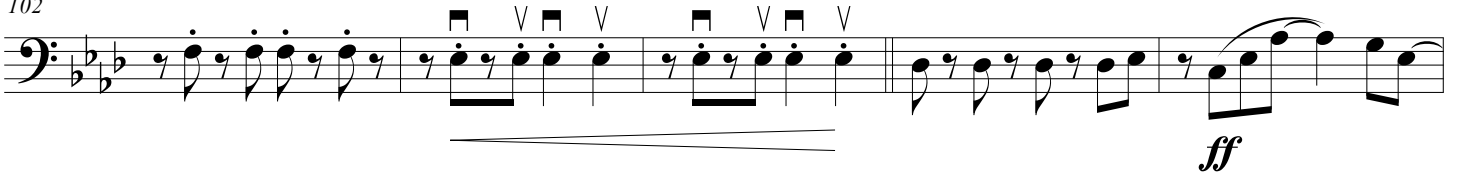
90



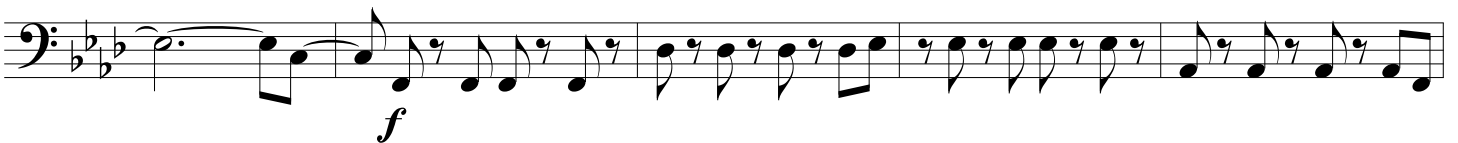
97



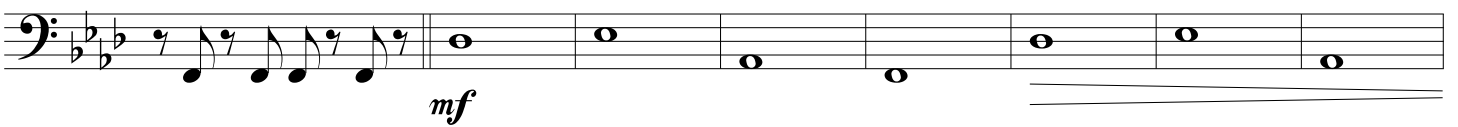
102



107



112



120

